



HPH Foyers

Information on use

General

Location	ETH Hönggerberg, Joseph-von-Deschwanden-Platz 1, 8093 Zurich
Room sizes	<p>HPH D Hall 1: 70 m² / 100 persons</p> <p>HPH D Hall 2: 212 m² / 275 persons</p> <p>HPH D Hall 3: 141 m² / 190 persons</p> <p>HPH D Hall 4: 141 m² / 190 persons</p> <p>HPH D Hall 5: 313 m² / 400 persons</p> <p>HPH D Hall 6: 110 m² / 145 persons</p> <p>Total HPH D Halls 1–6: 1,300 persons</p> <p>HPH G “Bridge”: Maximum of 240 persons For events with over 100 persons, we recommend the use of a hall on D Floor.</p>
Reservations	<p>HPH Foyers on D Floor: These are managed by the Academic Services Room and Course Scheduling team: raumreservation@ethz.ch</p> <p>HPH Foyer “Bridge” G Floor: Please send reservation enquiries to the Facility Services department: fs_info_gmh_hp@ba.ethz.ch</p>
Permits	Applications for events requiring permits must be submitted in advance, using the form.

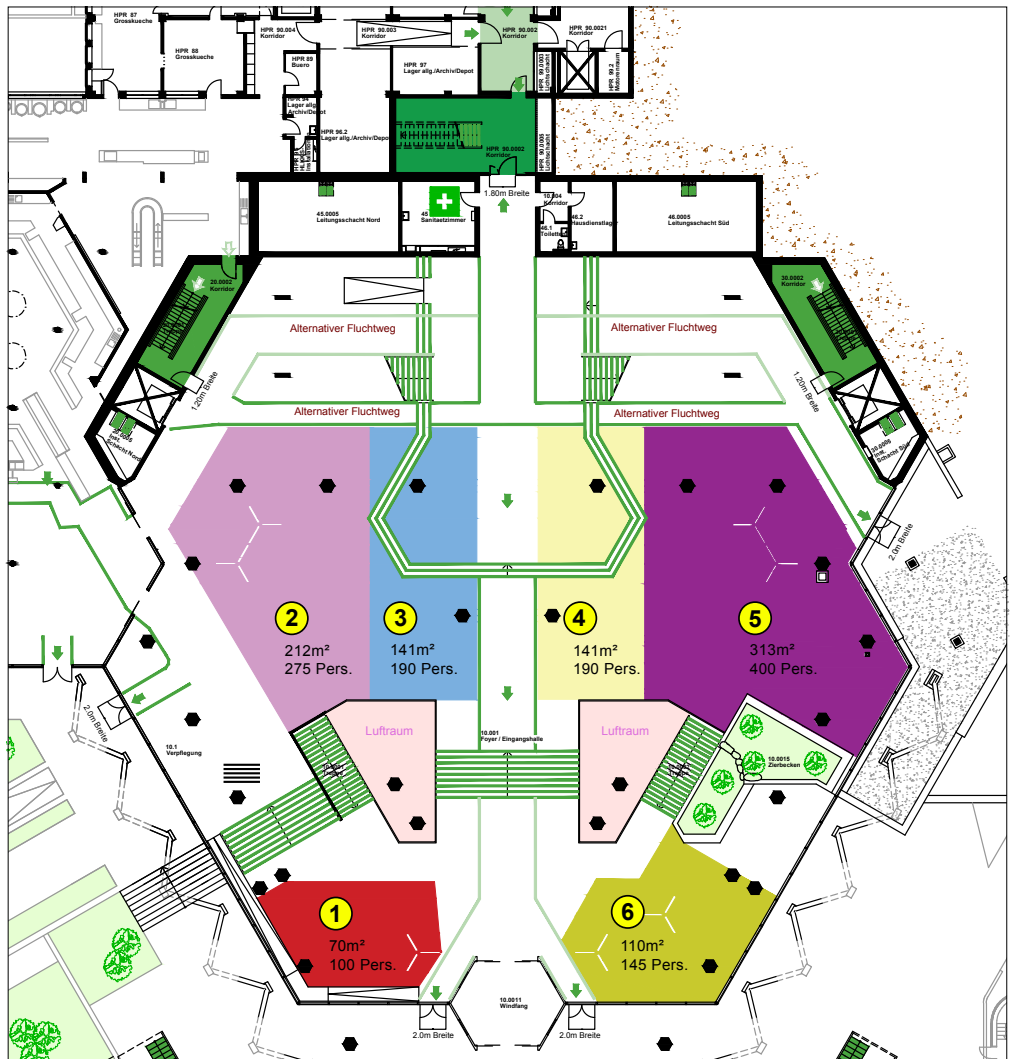
Conditions for use

Permitted use	The HPH Foyers are ideal complementary spaces for conferences or other events, and they are suitable for poster sessions, exhibits, registration, smaller and larger drinks receptions, and also coffee breaks.
Furniture, inventory	Inventory must be ordered well in advance from the Facility Services department, by emailing fs_info_gmh_hp@ba.ethz.ch . Inventory not provided by the Facility Services department requires a special permit. Exhibition elements or decorations must not obstruct the visibility of the escape route signs/markings.
Catering	ETH Zurich catering partners are permitted, as well as external catering providers contracted by the event organiser. It is prohibited to prepare hot food, and equipment to keep food warm must only be powered by electricity.
Power connections	There are seven CEE 63A sockets for electrical distribution boards on HPH D Floor. Their use must be agreed with the Facility Services department.
Fire regulations	The fire regulations and fire protection requirements for the HPH Building must be respected. Escape routes must be kept clear at all times. (See the escape route plan on pages 3 and 4).
Waste disposal, cleaning	The HPH Foyers must be left in a clean condition. The event organiser is responsible for disposing of waste. No adhesive tapes must be used on walls or floors. Expenses for cleaning and services that exceed the usual scope will be invoiced to the event organiser as per the price list for additional services.
Signage, route guidance	It is prohibited for users themselves to affix signs to floors and walls. For route guidance and/or signage in the indoor area of the HPH, contact the Facility Services department: fs_info_gmh_hp@ba.ethz.ch .
Noise emissions, music, microphones	Consideration must be shown for people in the surrounding premises. Playing music and using microphones are not allowed without a special permit. A break chime is allowed.
All-purpose room	Room HPH C 10.1 can be reserved in addition to the HPH Foyers. With an area of 18.7 m ² (maximum of 8 persons), it is suitable for use as a meeting or storage room, cloakroom and/or operational office. Please send reservation enquiries to the Permits Office: bewilligungen@services.ethz.ch

Plans






Escape route plan HPH D Floor including floor area allocation

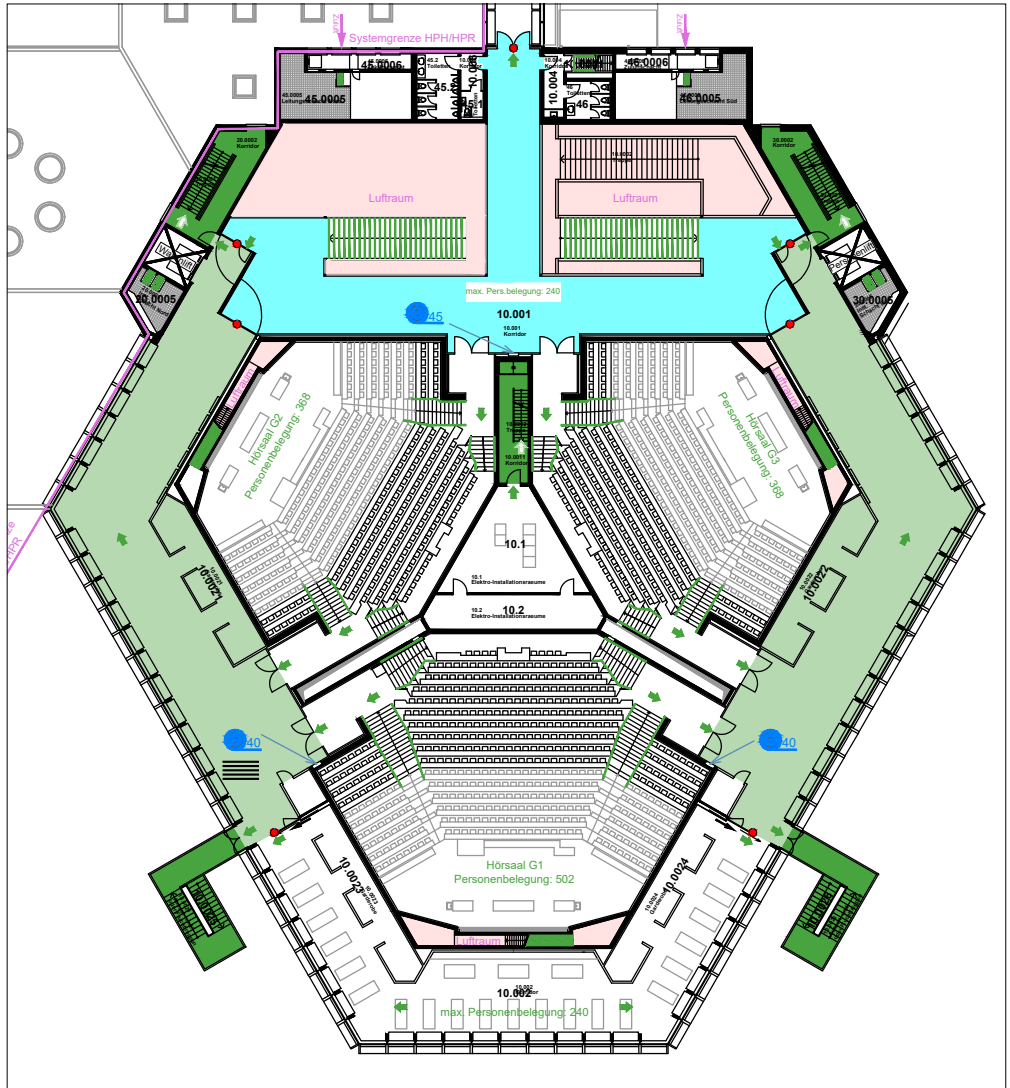
- Vertical escape route
- Horizontal escape route
- Alternative escape route
- Escape route that must be kept clear
- Foyer areas that can be rented



Plans

Escape route plan HPH G Floor including the "Bridge" area (light blue)

-  Vertical escape route
-  Horizontal escape route
-  Alternative escape route
-  Escape route that must be kept clear
-  "Bridge" Foyer



ETH Zurich
Campus Services department
Permits
Binzmühlestrasse 130
8092 Zurich

Tel.: +41 44 633 25 18
bewilligungen@ethz.ch

www.ethz.ch/bewilligungen

© ETH Zurich, December 2024